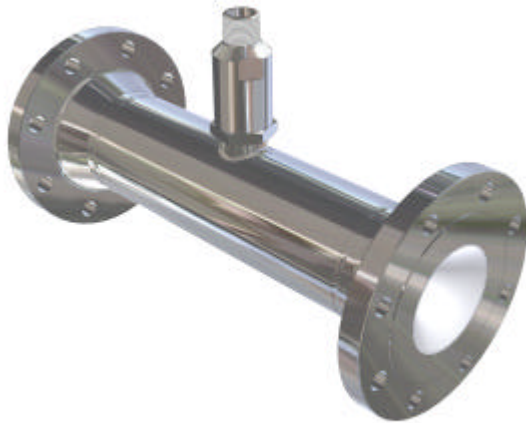


MATRE FOAM INDUCTOR



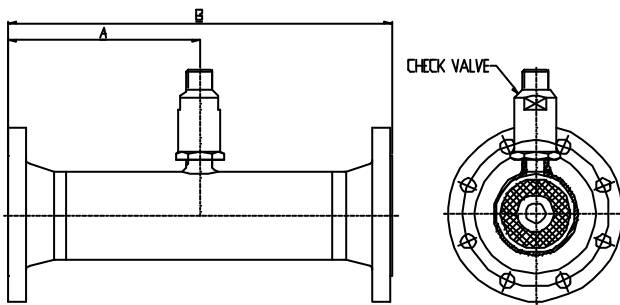
1"	FOI-1
1 1/2"	FOI-1.5
2"	FOI-2
3"	FOI-3
4"	FOI-4
6"	FOI-6
8"	FOI-8

TYPE	CONNECTION		CAPACITY	
	WATER	FOAM	MIN. l/min.	MAX. l/min.
FOI-1	1"ANSI / DN25	1/2" BSP/NPT	100	200
FOI-1.5	1 1/2"ANSI / DN40	1/2" BSP/NPT	150	300
FOI-2	2"ANSI / DN50	1/2" or 1" BSP/NPT	200	500
FOI-3	3"ANSI / DN80	1" or 1 1/2" ANSI/DIN	500	1.200
FOI-4	4"ANSI / DN100	1" or 1 1/2" ANSI/DIN	1.000	3.000
FOI-6	6"ANSI / DN150	1 1/2" or 2" ANSI/DIN	3.000	8.000
FOI-8	8"ANSI / DN200	2" or 2 1/2" ANSI/DIN	7.000	11.000

Larger sizes as 10" and 12" on request.

Note 1. Inductor systems require a fixed water flow.

Note 2. This data sheet is for general guidelines only. Most of the Matre Foam Inductors are designed to customers specifications. Always contact Matre Maskin A/S for confirmation of details as water and foam connections, capacity and overall dimensions.



TYPE	A (mm)	B (mm)
FOI-1	75	150
FOI-1.5	112,5	225
FOI-2	100	200
FOI-3	175	350
FOI-4	250	500
FOI-6	300	600
FOI-8	400	800

CONSTRUCTION: Design Pressure : 20 bar
 Test pressure : 30 bar
 Foam insertion : 1-6%

MATERIALS: Casing: Bronze, AISI 316, 6Mo, Titanium gr.2.

PRESSURE DROP: 1-3% proportioning: 30% of inlet water pressure.
 3-6% proportioning: 35-45% of inlet water pressure.

The In-Line Foam Inductor, tailored to meet Your needs –



MATRE MASKIN A/S

N-5420 RUBBESTADNESET, NORWAY
 Tlf. : +47 534 27744 Fax. : +47 534 27892
 E-mail : company@matre.no www.matre.no