

# InnoVfoam B.V.

## Horizontal Bladdertank



## InnoVfoam B.V.

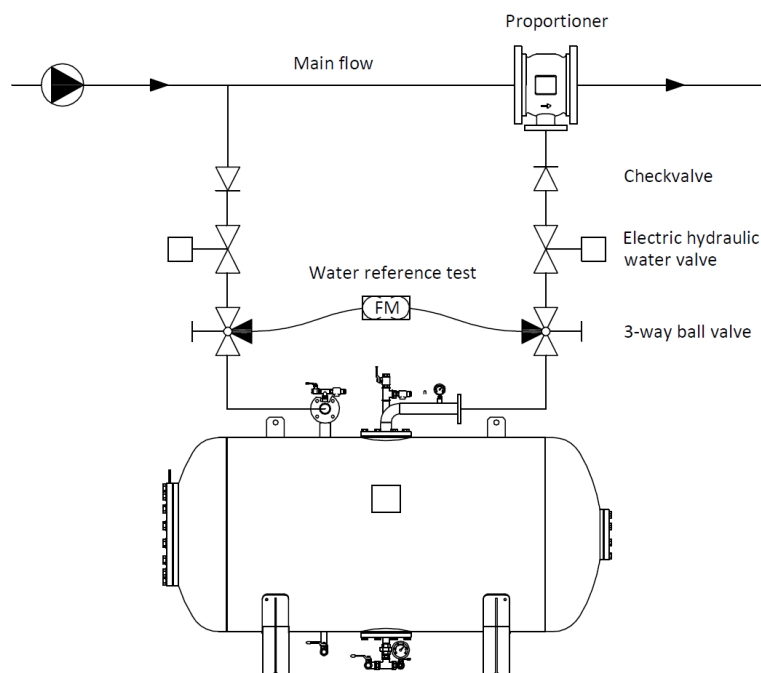
### Horizontal Bladdertank

The InnoVfoam bladdertank system is a system for mixing foam concentrate with water. A major advantage of the bladdertank system is that it can be installed in the main flow and subsequently it doesn't need an external energy supply. The integrated water reference test option offers a functionality test without foam consumption.

The system consist of two main components:

- Bladdertank with internal rubber bag (bladder) model IHBT
- Measuring part BTP or MWP proportioner

The bladdertank can be supplied in a great number of standard sizes up to a capacity of 10.000 liter. The proportioner, model, BTP can be supplied from DN40 up to DN350 and the wide range proportioner, model MWP, is available in DN150.



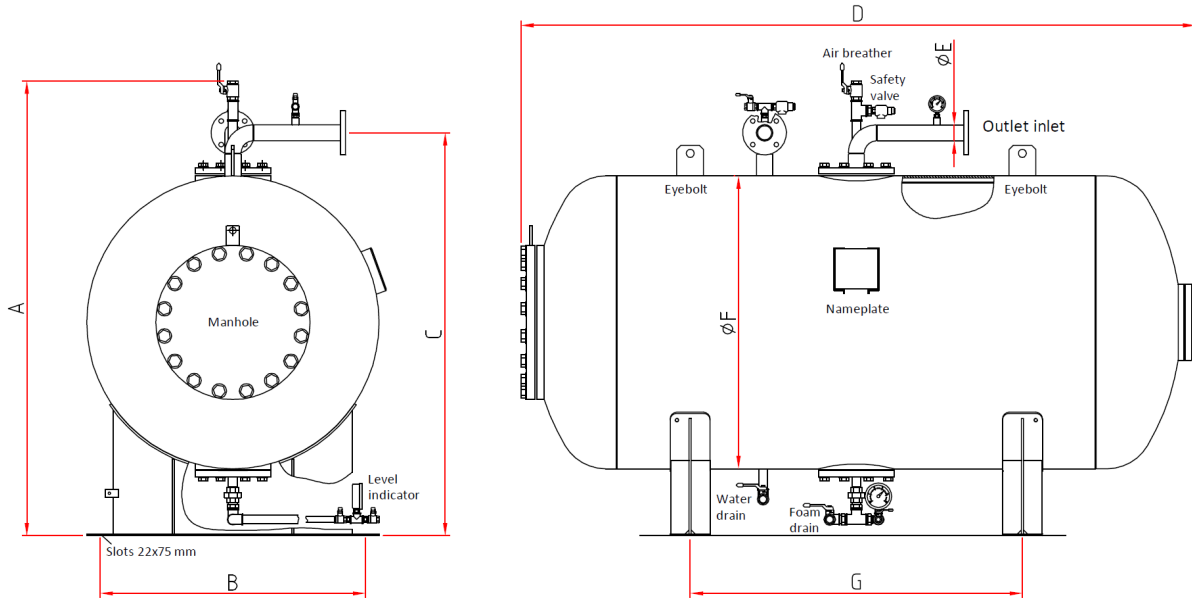
#### CHARACTERISTICS HORIZONTAL BLADDERTANK

Design pressure:	12 or 16 bar	Material manometers:	AISI
Max. working pressure:	12 or 16 bar	Material safety valves:	Brass
Test pressure:	17,2 or 24 bar	Material foamside:	AISI
Temperature range:	+0 °C +50 °C	Material bladder:	Hypalon-neopreen
Material tank:	Steel ASTM A 517	External coating:	RAL 3000
Material flanges:	ASTM A 105		50 micron epoxy primer
PED category:	PED 97/23/CE		

# InnoVfoam B.V.

## Horizontal Bladdertank

### DRAWINGS



### DIMENSIONS

Model	Dimensions [mm]						Working weight [kg]
	A	B	C	D	ØE	ØF	
IHBT-1.000	1.610	900		1.670	DN50 PN16	1.000	1.750
IHBT-1.250	1.610	900		1.970	DN50 PN16	1.000	2.165
IHBT-1.500	1.610	900		2.260	DN50 PN16	1.000	2.450
IHBT-2.000	1.710	1.000		2.540	DN50 PN16	1.100	3.300
IHBT-2.500	1.780	1.000		2.785	DN50 PN16	1.170	4.035
IHBT-3.000	1.885	1.150		2.840	DN50 PN16	1.270	4.720
IHBT-3.500	1.975	1.200		2.900	DN50 PN16	1.360	5.640
IHBT-4.000	2.065	1.250		2.950	DN50 PN16	1.450	6.310
IHBT-4.500	2.065	1.250		3.215	DN50 PN16	1.450	6.410
IHBT-5.000	2.220	1.400		3.025	DN50 PN16	1.600	7.685
IHBT-6.000	2.370	1.500		3.110	DN50 PN16	1.750	9.060
IHBT-7.000	2.390	1.500		3.460	DN65 PN16	1.750	9.230
IHBT-8.000	2.605	1.700		3.225	DN65 PN16	1.960	11.770
IHBT-9.000	2.740	1.850		3.305	DN65 PN16	2.100	13.590
IHBT-10.000	2.845	1.950		3.365	DN65 PN16	2.200	14.975